



It comes in the night and sucks the essence from your computers.

Kern Sibbald

January 3, 2008

The Bacula-web program was written by Juan Luis Frances
This manual documents Bacula-web version 1.38.11 (28 June 2006)

Contents

List of Figures

List of Tables

[11pt,a4paper]book html float graphicx bacula longtable makeidx index
setspace hyperref

What is Bacula-web?

Bacula-web is a php based web program that provides you a summarized output of jobs that have already run. It obtains its information from your Bacula catalog database. Aside from a nice graphical display, it provides summaries of your jobs, as well as graphs of job usage. This is a fairly high level Bacula management tool.

Requirements

- You must have a web server
- You must have PHP installed and working with your web server. We have tested php versions 4.3.4 and 5.0.4. For more information on php, please see: <http://www.php.net>.
- The following packages should be installed or configured as part of PHP.
 - Gettext (optional)
 - GD 2.x or greater
 - TrueType (optional)
 - Pear DB (<http://pear.php.net/package/DB>)
 - MySQL or PostgreSQL
 - The dbsize contrib package if you use PostgreSQL
- Bacula must also be installed and working, but does not need to be running to use Bacula-web.
- Your MySQL or PostgreSQL program must be running.

Installation

- Copy the bacula-web distribution to the root directory or a subdirectory of your web server root.

- Edit **configs/bacula.conf** and put your preferences as well as ensuring that the database configuration parameters point to the Bacula database you are using.

Testing the Installation

- Run **test.php** from your web browser. It should produce output that looks like:

```
Checking system for dependencies...
```

```
Checking gettext:  YES    Language support enabled
Checking Pear(DB): YES    Pear DB enabled
Checking GD:       YES    GD support enabled
```

```
Please, click the link below to test your graph system capabilities
(Bacula-web only use PNG): Test
```

- If gettext, Pear(DB) and GD all indicate yes, then things are going in the right direction. If not, you should correct each one before proceeding.
- If Pear(DB) is not installed and you have PHP 4.3.11 or newer, you can use the command:

```
pear install DB
```

to install it.

After installing it, check by doing:

```
pear list
```

On my machine (Kern), I get:

```
Installed packages:
```

```
=====
```

Package	Version	State
Archive_Tar	1.1	stable
Console_Getopt	1.2	stable
DB	1.7.6	stable
HTML_Template_IT	1.1	stable
HTTP	1.3.5	stable
Mail	1.1.4	stable
Net_Smtp	1.2.6	stable

Net_Socket	1.0.6	stable
Net_UserAgent_Detect	2.0.1	stable
PEAR	1.3.5	stable
XML_Parser	1.2.6	stable
XML_RPC	1.4.0	stable

- When everything is installed, click on the **Test** link at the bottom, which will bring up a new page with a number of PHPlot test graphs, using GD. It should be pretty obvious if they work, if not, you must correct the problems.
- If your graphs are not being reproduced, check that your PHP was built with the **-with-gd** option, and possibly with **-with-png-dir=DIR** where DIR is the path to the **libpng** installation directory.
- One of the most common problem is improper configuration of the variables in **bacula.conf** that define the database. If you see nothing but a blank screen or error messages, please recheck your database definitions paying careful attention to ensure that the database name and password are correct and that the database engine is running.
- If you get an error such as **DB Error: not found** assuming your database is MySQL, try using the following command:

```
mysql -h<host> -u<login> -p <db_name>
```

where, <host>, <login>, and <db_name> are the values you put in your **bacula.conf** file under the **DATABASE**

```
[.DATABASE]
host = 192.168.1.120

login = bacula-user
pass =
db_name = bacula
db_type = mysql
```

in this case, the mysql command would be:

```
mysql -h192.168.1.120 -ubacula-user -p bacula
```

If you get an error such as **DB Error: connection failed** assuming your database is PostgreSQL, make sure that TCP/IP-Connections to your bacula database are allowed via *pg_hba.conf*.

If nothing seems to be working and you are using SELinux, please remember that you must have the correct contexts for the bacula-web files. Assuming you have installed the files in `/var/www/html/bacula-web`, you can most likely fix the contexts with a command such as:

chcon -t httpd_sys_content_t /var/www/html/bacula-web -R

Screen Shots

Bacula-Web 1.0RC1 - Mozilla Firefox

File Edit View Go Bookmarks Tools Help

New Tab New Window Bookmarks Print

Back Forward Reload Stop Home

Mozilla Firebird Help User Support Forum Plug-in FAQ Herramientas del idio...

Bacula-Web 1.0RC1

GENERAL DATA

Total clients:	21	Total bytes stored:	1.63 TB
Total files:	2881743		

[Last month, bytes transferred](#) [Last month, bytes transferred \(pie\)](#)

Pools

Default

Volume Name	Volume Bytes	Media Type	When expire?	Last Written	Volume Status
-0001	3.21 GB	File	2004/06/17	2004/06/16	Used
-0002	371.00 B	File	2004/06/17	2004/06/17	Used
-0003	50.29 MB	File	2004/06/16	2004/06/16	Used
-0004	2.97 GB	File	2004/06/17	2004/06/17	Used

Incremental

Volume Name	Volume Bytes	Media Type	When expire?	Last Written	Volume Status
000001	84.00 GB	LTO2	2004/07/07	2004/06/17	Append
000002	221.14 GB	LTO2	2004/04/08	2004/04/08	Full
000003	379.08 GB	LTO2	2004/05/08	2004/06/05	Full

Full

Volume Name	Volume Bytes	Media Type	When expire?	Last Written	Volume Status
000004	262.54 GB	LTO2	2004/05/18	2004/05/09	Full
000005	250.04 GB	LTO2	2004/06/08	2004/05/23	Full
000006	244.32 GB	LTO2	2004/06/22	2004/05/31	Full
000007	218.89 GB	LTO2	2004/06/30	2004/06/17	Append

NullPool

Volume Name	Volume Bytes	Media Type	When expire?	Last Written	Volume Status
-0001	1.35 GB	File	2004/04/04	2004/03/25	Append
-0002	0	File	1970/01/11	1999/11/30	Append

Disco

Volume Name	Volume Bytes	Media Type	When expire?	Last Written	Volume Status
-0001	1.35 GB	File	2004/04/04	2004/03/25	Append
-0002	0	File	1970/01/11	1999/11/30	Append

Status from last 24h

Errors: 0

Terminated Jobs: 22

Total time spent to do backup: 05

Bytes transferred last 24h: 13

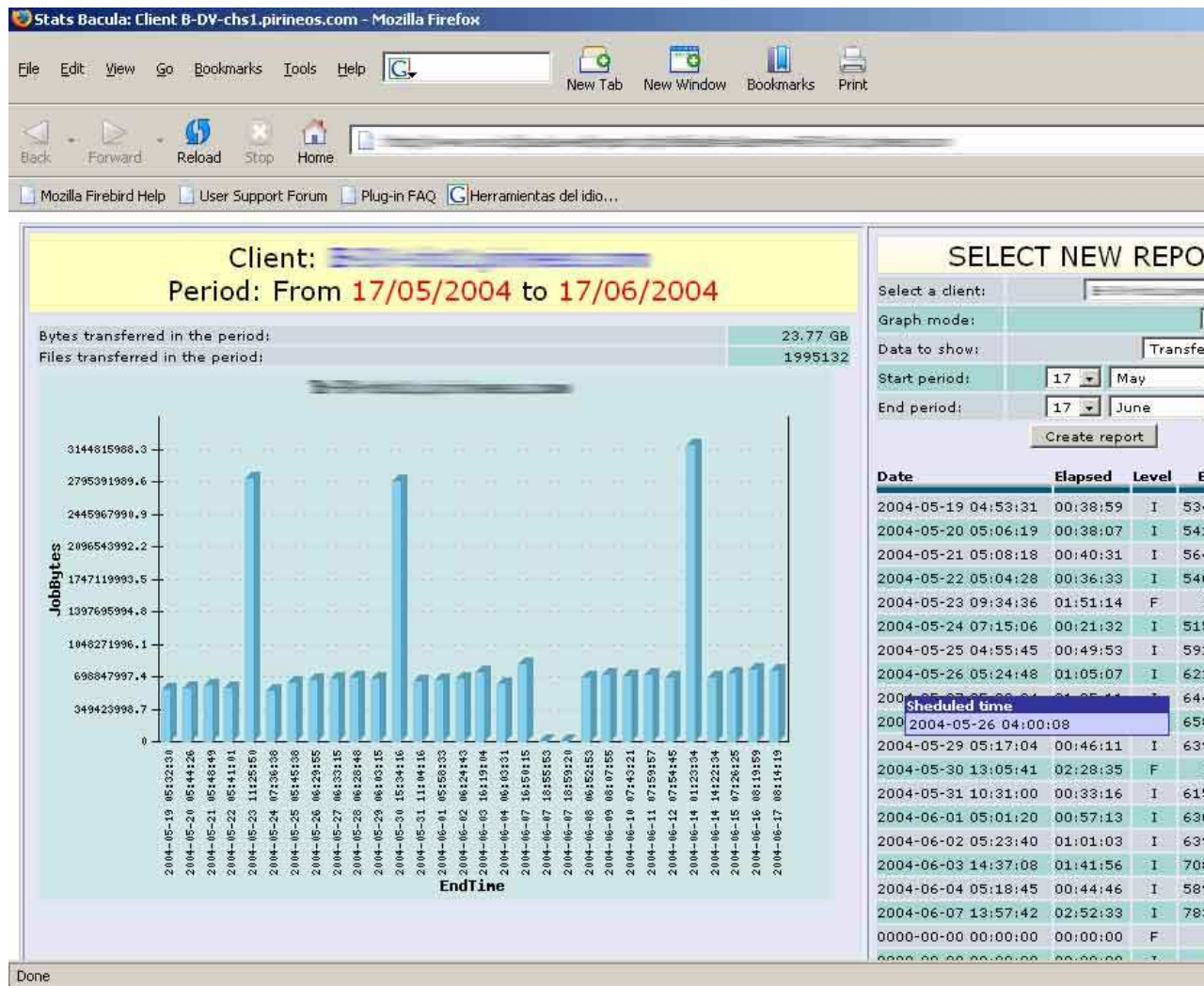
[Show details](#)

Select a client:

General report

Client	Bytes Transferred
Client 1	315033489.0
Client 2	280029768.8
Client 3	245026047.7
Client 4	210022326.6
Client 5	175018605.5
Client 6	140014884.4
Client 7	105011163.3
Client 8	70007442.2
Client 9	35003721.1

Done



Notes

The output from bacula-web is best viewed with a resolution of 1024x768 or better. Most browsers will produce good results including MS Internet Explorer.

If you have configured bacula-web for a language other than English, and the language changes are not being correctly displayed, restart your web server.

Bugs

- In the Pie graphs, the margins don't work. It is a phplot bug.
- The total elapsed time "calculation" is rudimentary. If you have 2 or more concurrent jobs this is not real.

Submit your bugs at this link: .

Translations

If you want add a new language not supported by bacula-web please, follow the following instructions:

Extract strings with this command (tsmarty2c.php is with bacula-web package):

```
./tsmarty2c.php templates > lang.c  
xgettext lang.c
```

Now you must have this file: messages.po

Edit messages.po to have your translations, then send us a copy of the file.